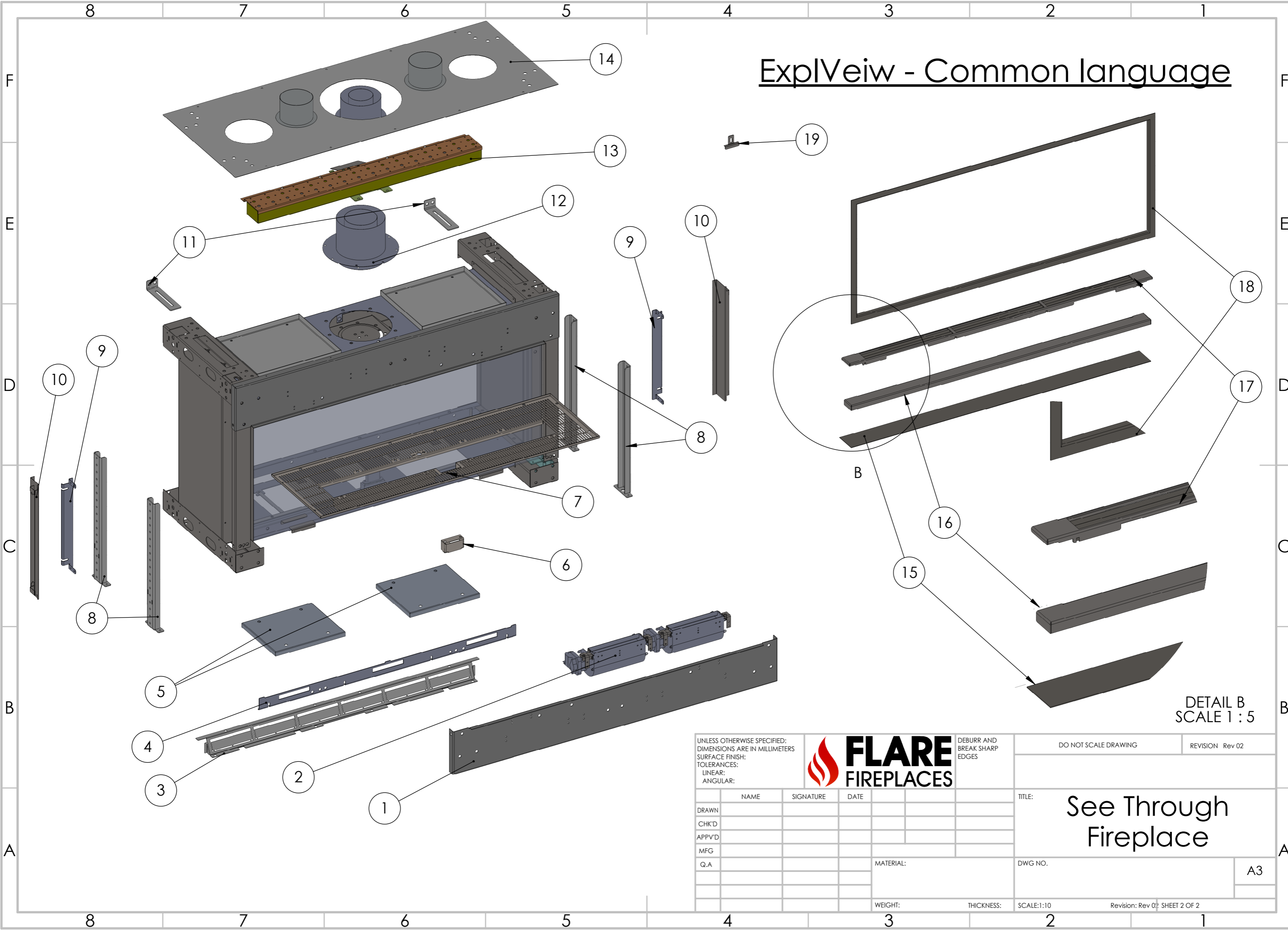


# ExplView - Common language



DETAIL B  
SCALE 1 : 5

UNLESS OTHERWISE SPECIFIED:  
DIMENSIONS ARE IN MILLIMETERS  
SURFACE FINISH:  
TOLERANCES:  
LINEAR:  
ANGULAR:



DEBURR AND  
BREAK SHARP  
EDGES

DO NOT SCALE DRAWING

REVISION Rev 02

	NAME	SIGNATURE	DATE
DRAWN			
CHK'D			
APPV'D			
MFG			
Q.A			

TITLE:	See Through Fireplace
DWG NO.	
MATERIAL:	A3
WEIGHT:	
THICKNESS:	
SCALE:1:10	
Revision: Rev 02 SHEET 2 OF 2	

## FLARE FIREPLACES | FIREPLACE COMPONENTS LIST

### SEE THROUGH

#	PART NUMBER	DESCRIPTION	#	PART NUMBER	DESCRIPTION
1	TXXX-05-11	Frame for TXXX	10	T-16 R / H / EH	vertical Filler R / H / EH
2	Fan- Double Glass	Fan use for double Glass (optional)	11	G-02	Earthquake Holder
3	TXXX-04-11	Led holder with Led (optional)	12	4x6 vent adapter	Vent adapter for 25" or 30" or 45" length Fireplaces
	TXXX-04-11-W	Led holder without Led		5x8 vent adapter	Vent adapter for 50" or 60" or 70" or 80" or 100" length Fireplaces
4	RDXXX-01-11	Horizontal rails for TXXX		3x5 vent adapter	use for power vent (optional)
5	TXXX-07	Explosion valve down	14	TXXX-12-11	TXXX cover for Summer Kit + 3x5 vent adapter (optional)
	TXXX-08	Explosion valve up in	15	TXXX-Filler 73	Filler instead screen. To cover the gap between the CG and the frame only when screen is removed. (optional)
	TXXX-09	Explosion valve up out	16	CXXX-10-11-S	Filler for Fireplace with Screen for TXXX
6	G-01-14	pilot cover	17	CXXX-10-11	Filler for Fireplace with double Glass (optional) for TXXX
7	TXXX-06	Screen for TXXX	18	T-XXX-Trim glass R / H / EH	Trim surround glass (optional) for TXXX
8	T-03	Legs for front Fireplaces	19	G-22	Reflective Back holder
9	G-34 R / H / EH	Vertical Rail R / H / EH			
13	Burner-XXX	FIREPLACE LENGTH	BURNER SIZE (INCHES)		
		25"	13 12/16"		
		30"	21 10/16"		
		45"	31 8/16"		
		50"	41 5/16"		
		60"	13 12/16", 21 10/16", 13 12/16"		
		70"	13 12/16", 31 8/16", 13 12/16"		
		80"	13 12/16", 41 5/16", 13 12/16"		
		100"	21 10/16", 41 5/16", 21 10/16"		

\*XXX REPRESENTS THE SIZE OF THE FIREPLACE, FROM 25" - 100"



**FLARE FIREPLACES | POWER VENT & SUMMER KIT PARTS LIST**

Part	SKU	Part Number	Note		Part	SKU	Part Number	Note
<b>Horizontal Power Vent</b>	100HPV				<b>Inline Power Vent</b>	100IPV		
PV Heat Resistant Fan	1PVHRF				PV Heat Resistant Fan	1PVHRF		
PV Internal Electronics Board	1PVIEB				PV Internal Electronics Board	1PVIEB		
Drift Switch	1PVIDS				Drift Switch	1PVIDS		
Drift Switch Tube	1PVDST				Drift Switch Tube	1PVDST		
3 Wire PV Data cable	1PVCBS				3 Wire PV Data cable	1PVCBS		BOARD SIDE
Solenoid	100DGS		SCREENED UNIT ONLY		Solenoid	100DGS		SCREENED UNIT ONLY
DG/PV Control Board	1PVCSB		SCREENED UNIT ONLY		DG/PV Control Board	1PVCSB		SCREENED UNIT ONLY
3x5 Adaptor Male	1PV35M	35CVS-ADM-F			3x5 Adaptor Male	1PV35M	35CVS-ADM-F	
3x5 Adaptor Female	1PV35F	35CVS-ADF-F			3x5 Adaptor Female	1PV35F	35CVS-ADF-F	
3X5 Reducer Kit	1PVARK				3X5 Reducer Kit	1PVARK		
<b>Vertical Power Vent</b>	100VPV				<b>Summer Kit</b>	1000SK		
PV Heat Resistant Fan	1PVHRF				SK Heat Resistant Fan	1SKHRF		
PV Internal Electronics Board	1PVIEB				SK Internal Electronics Board	1SKIEB		
Drift Switch	1PVIDS				4" Male Adaptor	1SK4MA		
Drift Switch Tube	1PVDST				6" Male Adaptor	1SK6MA		
3 Wire PV Data cable	1PVCBS				Summer Kit Cable SK Side	1SKIBC		
Solenoid	100DGS		SCREENED UNIT ONLY		Summer Kit Cable Board Side	1SKDGC		DOUBLE GLASS UNIT
DG/PV Control Board	1PVCSB		SCREENED UNIT ONLY		Summer Kit Relay Cable Kit (Blue)	1SKRKB		SCREENED UNIT ONLY
3x5 Adaptor Male	1PV35M	35CVS-ADM-F			Summer Kit Relay Cable (Green)	1SKRKG		
3x5 Adaptor Female	1PV35F	35CVS-ADF-F			Summer Kit Cover	1SKC30	Sk-30	
3X5 Reducer Kit	1PVARK					1SKC45	Sk-45	
						1SKC50	Sk-50	
						1SKC70	Sk-70	
						1SKC80	Sk-80	
					Self Tapping Screws	10MSTS		

## FLARE FIREPLACES GLASS SIZING CHART (FF & ST)

### Flare Front Facing & See Through (16" Regular Glass)

Fireplace	Tempered Glass (in)		Ceramic Glass (in)		Reflective Back (in)	
FF/ST-100	96 5/8	16 5/8	96 5/8	16 5/8	95 1/2	14 3/16
FF/ST-80	79 3/4	16 5/8	79 3/4	16 5/8	77 3/8	14 3/16
FF/ST-70	67 3/16	16 5/8	67 3/16	16 5/8	65 15/16	14 3/16
FF/ST-60	57 5/16	16 5/8	57 5/16	16 5/8	56 1/8	14 3/16
FF/ST-50	47 1/2	16 5/8	47 1/2	16 5/8	46 1/4	14 3/16
FF/ST-45	40 13/16	16 5/8	40 13/16	16 5/8	39 9/16	14 3/16

### Flare Front Facing & See Through (24" High Glass)

Fireplace	Tempered Glass (in)		Ceramic Glass (in)		Reflective Back (in)	
FF/ST-100-H	96 5/8	24 1/2	96 5/8	24 1/2	95 1/2	21 5/8
FF/ST-80-H	79 3/4	24 1/2	79 3/4	24 1/2	77 3/8	21 5/8
FF/ST-70-H	67 3/16	24 1/2	67 3/16	24 1/2	65 15/16	21 5/8
FF/ST-60-H	57 5/16	24 1/2	57 5/16	24 1/2	56 1/8	21 5/8
FF/ST-50-H	47 1/2	24 1/2	47 1/2	24 1/2	46 1/2	21 5/8
FF/ST-45-H	40 13/16	24 1/2	40 13/16	24 1/2	39 9/16	21 5/8
FF/ST-30-H	27 13/16	24 1/2	27 13/16	24 1/2	26 9/16	21 5/8

### Flare Front Facing & See Through (30" Extra High Glass)

Fireplace	Tempered Glass (in)		Ceramic Glass (in)		Reflective Back (in)	
FF/ST-100-EH	96 5/8	30 13/16	96 5/8	30 13/16	95 1/2	27 15/16
FF/ST-80-EH	79 3/4	30 13/16	79 3/4	30 13/16	77 3/8	27 15/16
FF/ST-70-EH	67 3/16	30 13/16	67 3/16	30 13/16	65 15/16	27 15/16
FF/ST-60-EH	57 5/16	30 13/16	57 5/16	30 13/16	56 1/8	27 15/16
FF/ST-50-EH	47 1/2	30 13/16	47 1/2	30 13/16	46 1/4	27 15/16
FF/ST-45-EH	40 13/16	30 13/16	40 13/16	30 13/16	39 9/16	27 15/16
FF/ST-30-EH	27 13/16	30 13/16	27 13/16	30 13/16	26 9/16	27 15/16